

Asian and Australasian Society of Labour Economics 2018 Conference

13-15 December 2018
Seoul National University, Seoul

PROGRAM





Asian and Australasian
Society of Labour Economics
2018 Conference



CONTENTS

Welcome	02
Conference Information	04
Venues	08
Keynote & Invited Speakers	10
Conference Programme	15
Parallel Sessions	22
<small>Papers and Locations</small>	
Tourist Information	53
About Seoul National University & Department of Economics	61

WELCOME FROM
THE PRESIDENT OF SEOUL NATIONAL UNIVERSITY



**Chan-wook
Park**

Acting President,
Vice President for
Academic Affairs

Seoul National
University

Good afternoon ladies and gentlemen,

It is a great pleasure and an honor to welcome you all in this opening ceremony of the 2018 second annual conference of the Asian and Australasian Society of Labour Economists. On behalf of Seoul National University, I am especially honored to welcome everyone representing many distinguished organizations around the world. I would also like to take this opportunity to express my gratitude to the organizing committee and all faculty and staff members at the Department of Economics of Seoul National University for their hard work that made this event possible.

This conference will be a great and exciting opportunity for all participants to share their invaluable cutting-edge ideas and knowledge in the dynamic field of labor economics. Seoul National University is proud to host this important event, and we hope that the conference and the society will continue to play a central role in discussing new ideas about labor markets and social policies.

As you all know, Asia-Pacific is a vibrant and dynamic region. Countries in Asia-Pacific are currently facing economic challenges such as ageing population, growing inequality, and rapid technological advancements. I truly believe that the conference will lead to a stream of ideas to shed a new light on these ongoing challenges encountered in this region and the world.

In particular, in South Korea, the relationship with North Korea is rapidly changing in recent years. Legitimate speculations about official diplomatic ties, economic cooperation and potentially unification of the two countries are being made by both experts and press alike. If the North indeed shifts towards open economy or if the two countries agree on unification many economic problems, essentially labor economic issues, will arise. Based on German unification, we learned that it takes enormous amount of resources and time for two different regimes to unify. As such, economic policies based on scientific analysis, and economists' overall wisdom could be foreseeably required in the near future. I wish that labor economists from Asia-Pacific region would pay more interest in this very important issue.

Seoul National University fully supports and shares the vision of today's conference. Seoul National University, as the leading research university in Korea, believes in global collaboration as the key to ground-breaking discoveries in all academic fields. As such, I would like to express my gratitude for the opportunity to host this important event.

Finally, while you are hard at work and the weather is cold, I hope that you will take some time to enjoy our beautiful city of Seoul. I wish everyone an enjoyable visit to Seoul and an immensely productive time attending the conference.

Thank you.

WELCOME FROM
THE ORGANISERS

Dear Participant:

Welcome to the Second Conference of the Asian and Australasian Society of Labour Economics (AASLE2018). We are delighted to see you here in Seoul and thank you for travelling from locations both near and far to join us in supporting this exciting initiative.

The Inaugural Conference of the Asian and Australasian Society of Labour Economics (AASLE) in Canberra last year proved to be a great success, thanks to all the hard work and resources ANU and CReAM put in and the support of all attendees. AASLE2017 was an excellent start and facilitated communication and collaboration between scholars in different countries, and with researchers in the Americas and Europe.

Over the last 12 months we have also made a lot of progress setting up the society. Jessica Pan and Christian Dustmann worked with a law firm in Singapore to develop a constitution that is in line with what the Executive Board decided, and with Singaporean regulations. The Society was recently established in Singapore and can now offer formal membership.

AASLE2019 will take place in Singapore. Jessica will be the local organizer, and National University of Singapore (NUS) will support this conference. AASLE will also participate in the next World Meeting of the US-based Society of Labor Economists (SOLE) and the European Association of Labour Economists (EALE) in Berlin in 2020. Berlin2020 will be the first world meeting that includes AASLE.

We hope that in particular, young scholars will benefit from this new Society, and we are working towards more initiatives for the future, such as a

job market events for young scholars, poster sessions, and others. Towards the end of the conference, after the ADB Panel on Saturday, we will have the AASLE General Meeting, and we hope you will attend. During that meeting, we will provide you with more information about the Society, the membership and the election process.

AASLE2018 has an exceptional programme, with some of the very best labour economists from around the world giving keynote and invited lectures and participating on panels and in contributed sessions. The three days of the conference will thus be filled with interesting lectures, panel discussions and high quality research sessions. We hope that the AASLE annual conference will be a future forum for the exchange of ideas, for learning more about our respective fields and helping each other find better solutions to the challenges we face.

Thank you for joining us at AASLE2018 in Seoul.

**Christian Dustmann and
Jungmin Lee**

CONFERENCE INFORMATION

Registration

Registration will open at 10am on Thursday, 13 December in front of the Grand Ballroom Hanra.

Information Desk

The registration areas will also serve as information desk during the conference and will be staffed by volunteers throughout the conference. These volunteers can be identified by their light purple t-shirts. We are happy to answer any question regarding conference logistics, directions to venues, and so on.

Social Events

The conference social events will be:

Thursday, 13 December

Cocktail Reception, the Grand Ballroom Hanra

Friday, 14 December

Conference Dinner, the Grand Ballroom Hanra

The conference dinner will provide delegates the opportunity to network, unwind and enjoy cuisine from one of Seoul's finest hotels.

Saturday, 15 December

Guided Tour to the National Museum of Korea (NMK)

The NMK has a variety of permanent collections through thousands of years of history.

Catering

Coffee breaks and lunch will take place in Grand Ballroom Hanra. The refreshments will also be available all day during the conference.

Venue Access

All participants will receive a name card during the registration at the conference. The name card must be worn at all times and is your entrance ticket to the session rooms and all conference events.

Internet Access

WiFi internet access is available across the venue, Seoul Dragon City. The WiFi SSID and password will be notified as the registration is completed. Since wireless internet is widely available in Seoul, you don't need to worry about internet access (especially, almost all cafes provide WiFi services). You may

CONFERENCE INFORMATION

purchase a pre-paid SIM card for internet access via LTE, but stores selling pre-paid SIM cards are somewhat limited in Seoul. If you need a pre-paid SIM card, please ask our volunteers about it. Our volunteers can provide this information.

Printing

Delegates can print at the Business Corner on the ground floor of Seoul Dragon City. It is near the front desk of IBIS Styles.



ATMs

There are ATMs available on the ground floor and the second floor of Seoul Dragon City.

Lost Property

Please contact the registration and information desk in front of the Grand Ballroom Hanra if you have lost or found an item.

Emergency Situation

To contact the police, fire brigade or ambulance service in a emergency, please contact our volunteers. Below is a helpful list of numbers you can contact when our volunteers are not nearby: Korean Travel Hotline 1330, Police 112, Fire & Ambulance 119, Sinchon Severance Hospital +82-2-2228-5800 (English, Russian), +82-2-2228-5801 (Japanese), *82-2-2228-5825 (Chinese).

Smoking

Smoking is prohibited inside of the building of Seoul Dragon City. You can smoke at the designated area outside of Seoul Dragon City.

Transportation

Airport Limousine Bus

Airport limousine bus to Incheon International Airport is available at the Seoul Dragon City Yongsan bus stop. The bus stop is located between Ibis Styles and Grand Mercure. You can find it near Seoul Dragon City's golden mascot, DoDo.



Bus No.
6030

Fare
KRW 15,000 (one-way)

Payment
Credit card or cash (Korean transportation card or tickets can be purchased at front desk by credit card)

Operation Hours
04:42-20:08

Duration
Approx. 1 hour

Allocation
Every 30-35 min.

Bus Stop
Seoul Dragon City Yongsan, Incheon International Airport Bus Stop (Terminal 1: 1F No.6, Terminal 2: Transportation center Basement 1 No. 32)
The services might be delayed due to track conditions.

BUS TIME

4 : 52	13 : 13, 53
5 : 22, 52	14 : 33
6 : 22, 57	15 : 08, 43
7 : 36	16 : 18, 58
8 : 18, 58	17 : 38
9 : 38	18 : 18, 58
10 : 18, 53	19 : 38
11 : 28	20 : 18
12 : 03, 38	

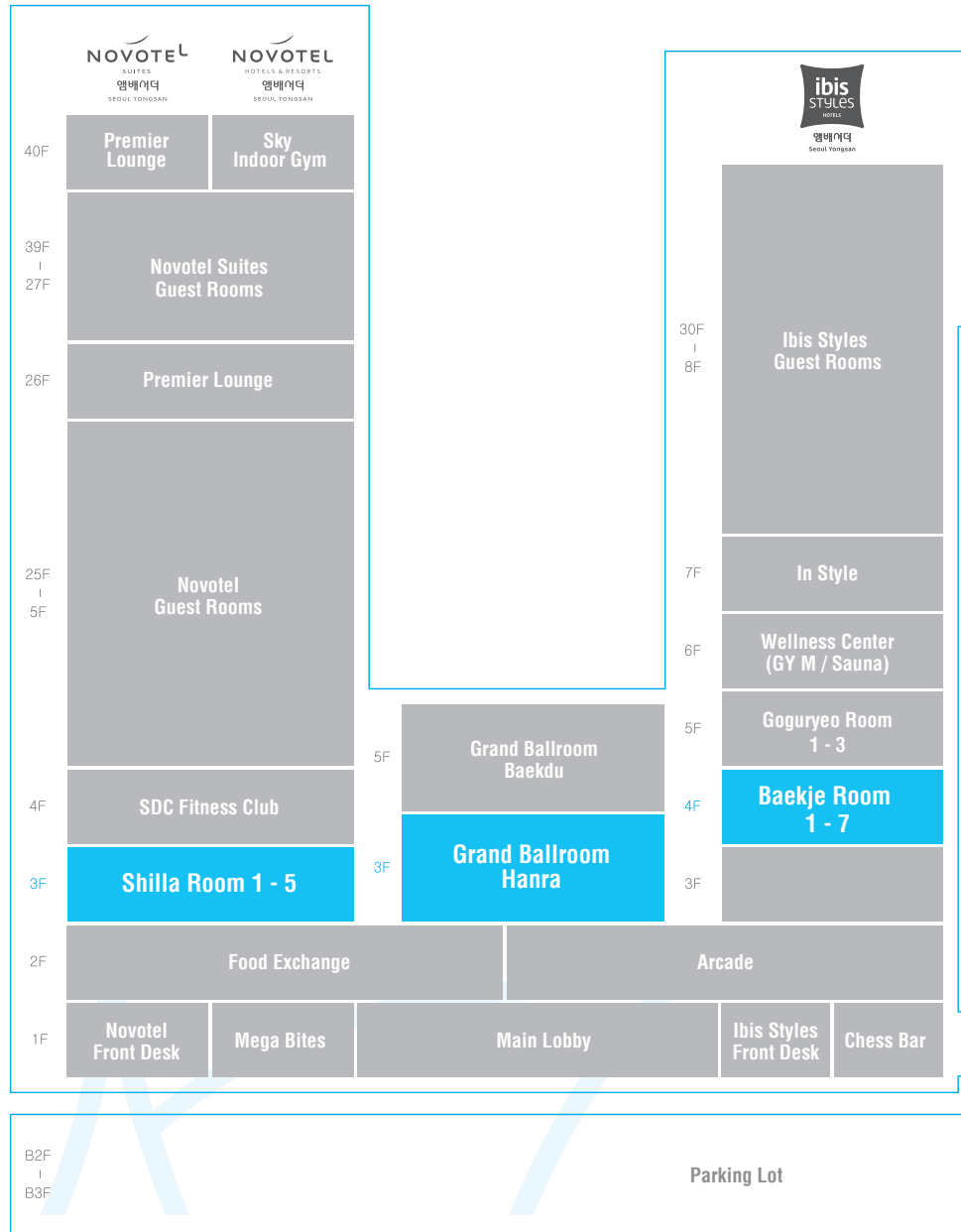
Subway

Seoul Dragon City is connected to Yongsan Station Exit 3 directly by the footbridge. Subway Line no. 1 is available at Yongsan Station and Subway Line no. 4 is available at Sinyongsan Station, which is 200 meters apart from Yongsan Station. You can go to Incheon International Airport or Gimpo International Airport by subway with transfers.

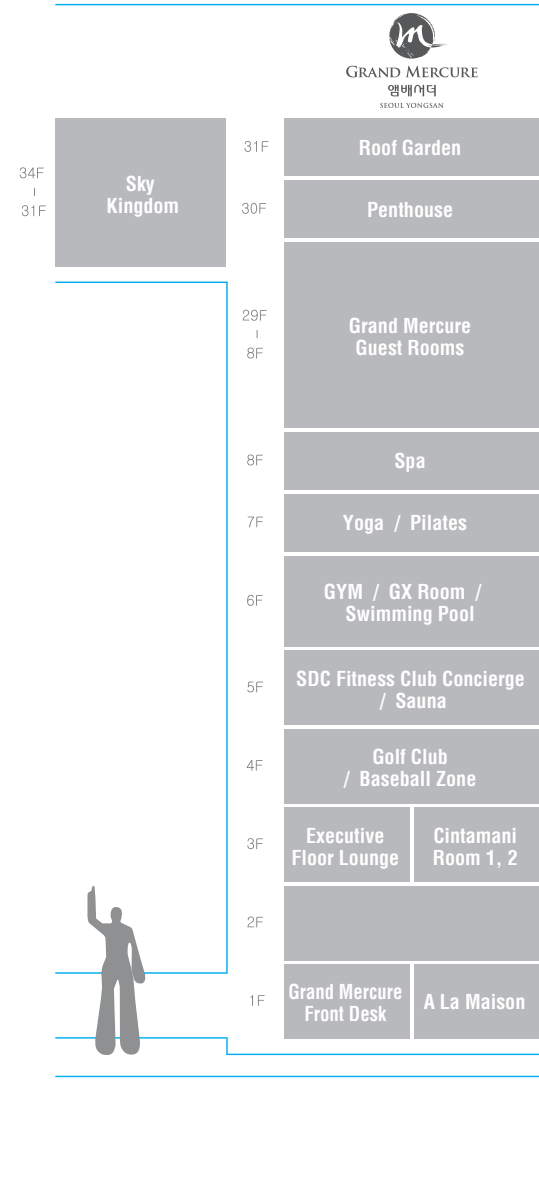
Bus

There are many city buses available at the bus stop near Sinyongsan Station. For details, please search at map services such as Google Maps or contact our volunteers.

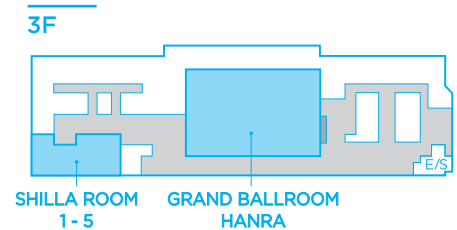
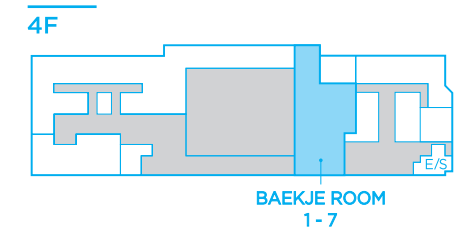
VENUES



VENUES



The conference will be held in meeting & convention spaces of Seoul Dragon City. Keynote speeches, cocktail reception and conference dinner will take place in Grand Ballroom Hanra (3F). Each parallel session is run in Shilla Room 1~5 (3F) and Baekje Room 1~5 (4F), respectively.



KEYNOTE & INVITED SPEAKERS

Asian and Australasian
Society of Labour Economics
2018 Conference



KEYNOTE SPEAKERS



**Richard
Blundell**

**Ricardo Professor of
Political Economy**

**Department of
Economics, University
College London**

Professor Sir Richard Blundell, CBE FBA holds the David Ricardo Chair of Political Economy at University College London where he was appointed Professor of Economics in 1984. He is a graduate of the University of Bristol and the London School of Economics. He held his first academic appointment at University of Manchester. He is Director of the ESRC Centre for the Microeconomic Analysis of Public Policy at the Institute for Fiscal Studies (IFS) where he was Research Director from 1986-2016. He has held visiting professor positions at UBC, MIT and Berkeley. He was awarded a Commander of the Most Excellent Order of the British Empire (CBE) and a Knighthood for services to Economics and Social Science. His research covers the empirical microeconomic study of consumer, savings and labour supply behaviour. He has studied the relationship between taxation, family labour supply and consumer behavior. He has developed new microeconomic tools for the study of dynamic panel data models and the nonparametric analysis of individual decisions.



**Henry
Farber**

**Hughes-Rogers
Professor of
Economics**

**Department of
Economics, Princeton
University**

Henry Farber is the Hughes-Rogers Professor of Economics and an Associate of the Industrial Relations Section at Princeton University. Professor Farber graduated from Rensselaer Polytechnic Institute (B.S., 1972) the New York State School of Industrial and Labor Relations, Cornell University, (M.S., 1974) and Princeton University (Ph.D., 1977). In addition to his faculty position at Princeton, Farber is a Research Associate of the National Bureau of Economic Research (NBER) and a Research Fellow of the Institute for the Study of Labor (IZA). He is also a Fellow of the Econometric Society, the Society of Labor Economists, and the Labor and Employment Relations Association. Before joining the Princeton faculty in 1991, Farber was Professor of Economics at the Massachusetts Institute of Technology (1977-1991). Farber's current research interests include unemployment, liquidity constraints and labor supply, labor unions, worker mobility, wage dynamics, and analysis of the litigation process.

INVITED SPEAKERS

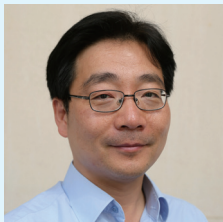


David Green

Professor of Economics (Director)

Vancouver School of Economics, The University of British Columbia

David Green is a professor in the Vancouver School of Economics at University of British Columbia and an International Fellow at the Institute for Fiscal Studies in London. He is also an External Fellow of the Centre for Research and Analysis of Migration, University College London and a Research Associate of the Canadian Centre for Policy Alternatives. Professor Green graduated from Queen's University (B.A., 1984) and Stanford University (Ph.D., 1990). His research interests centre around determinants of the wage and employment structure. In his recent work, this has entailed bridging between macro labour (worrying about general equilibrium effects) and micro labour identification issues.



Simon (Sokbae) Lee

Professor of Economics

Department of Economics, Columbia University

Sokbae "Simon" Lee is a Professor of Economics at Columbia University in the City of New York. He is also a Research Economist of the Centre for Microdata Methods and Practice (CeMMAP), the Institute for Fiscal Studies. Simon graduated from Seoul National University (B.A. and M.A., 1998) and the University of Iowa (Ph.D., 2002). He held his first academic appointment at University College London. Before joining the Columbia faculty in 2016, he was a Professor of Economics at Seoul National University. His research includes diverse topics of econometrics, applied microeconomics, and statistics. Professor Lee has been elected a 2014 Fellow of the Econometric Society.

INVITED SPEAKERS



Jessica Pan

Associate Professor of Economics

Department of Economics, National University of Singapore

Jessica Pan is an Associate Professor of Economics at the National University of Singapore. In addition, Jessica is a Research Fellow of the Institute for the Study of Labor (IZA) since March 2016. Jessica's research focuses on applied topics in labor economics and the economics of education. Her current projects examine gender differences in labor market and educational outcomes; international migration and the labor market effects on source and host countries; and topics in labor economics such as discrimination, marriage markets, and the returns to education. Her work has been published in several leading peer-reviewed journals, including the Quarterly Journal of Economics, the Journal of Labor Economics, and the American Economic Journal: Applied Economics. She was born in Singapore and received a Bachelor's in economics from the University of Chicago, followed by an MBA and Ph.D. from the University of Chicago, Booth School of Business.



Uta Schönberg

Professor of Economics

Department of Economics, University College London

Uta Schönberg is a Professor of Economics at University College London (UCL) and a Researcher at the Institute for Employment Research (IAB) in Nuremberg. Professor Schönberg graduated from the University of Hanover (M.S., 1998) and the University College London (Ph.D., 2004). In addition to her faculty position at UCL, Schönberg is a Research Fellow of the Institute for the Study of Labor (IZA). Before joining the UCL faculty in 2008, she was an Assistant Professor at the University of Rochester. Her research is in applied microeconomics, with a special interest in wage inequality and wage dynamics; family economics; the economics of education; and the economics of migration. Schönberg was awarded the Philipp Leverhulme Prize in 2016 and is currently a Joint Managing Editor at the Review of Economic Studies.

CONFERENCE DINNER SPEAKER



Changyong Rhee

Director of the Asia and Pacific Department

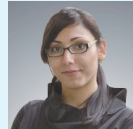
International Monetary Fund

Changyong Rhee is the Director of the Asia and Pacific Department at the IMF, where he oversees the Fund's work on the region, including its lending operations and bilateral and multilateral surveillance of economies ranging from China, Japan, and India to the Pacific Islands. Prior to joining the IMF in February 2014, Mr. Rhee was Chief Economist of the Asian Development Bank (ADB); Secretary General and Sherpa of the Presidential Committee for the 2010 G-20 Seoul Summit; Vice Chairman of the Financial Services Commission (FSC) and Chairman of the Securities and Futures Commission of Korea; professor of economics at Seoul National University and the University of Rochester. He has also been a frequent policy advisor to the Government of Korea, including in the Office of the President, the Ministry of Finance and Economy, the Bank of Korea, the Korea Securities Depository, and the Korea Development Institute. Mr. Rhee has published widely in the fields of macroeconomics, financial economics, and on the Korean economy. He holds a Ph.D. from Harvard University and an undergraduate honors degree from Seoul National University, both in economics.

Organising Committee



Christian Dustmann
University College London



Maria Lambrianidou
University College London



Sok Chul Hong
Seoul National University



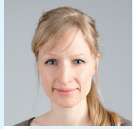
Chulhee Lee
Seoul National University



Dae-II Kim
Seoul National University



Jungmin Lee
Seoul National University



Alice Kügler
University College London

CONFERENCE PROGRAMME

Asian and Australasian
Society of Labour Economics
2018 Conference

AASLE 2018 Conference Program Overview

Time	Thursday Dec. 13	Friday Dec. 14	Saturday Dec. 15	
08:00		Coffee Break @ GBR Hanra 3	Coffee Break @ GBR Hanra 3	
08:30				
09:00		Parallel Session 2 @ Shilla 1~4, Baekje 1~5	Parallel Session 5 @ Shilla 1~4, Baekje 1~5	
09:30				
10:00	Registration (onwards) @ GBR Hanra entrance			
10:30		Coffee Break @ GBR Hanra 3	Coffee Break @ GBR Hanra 3	
11:00				
11:30		Parallel Session 3 @ Shilla 1~4, Baekje 1~5	Parallel Session 6 @ Shilla 1~5, Baekje 1~5	
12:00				
12:30			Move to ADB Panel and Lunch	
13:00				
13:30			Keynote Speech and Lunch Box @ GBR Hanra 1 & 2	ADB Panel and Lunch Box @ GBR Hanra 1 & 2
14:00		Opening Speech @ GBR Hanra 1 & 2		
14:30		Keynote Speech @ GBR Hanra 1 & 2	Parallel Session 4 @ Shilla 1~5, Baekje 1~5	End Speech and AASLE General Meeting @ GBR Hanra 1 & 2
15:00	Coffee Break @ GBR Hanra 3			
15:30				
16:00	Parallel Session 1 @ Shilla 1~4, Baekje 1~5	Coffee Break @ GBR Hanra 3		
16:30		Invited Speaker Uta Schönberg @ GBR Hanra 1	Invited Speaker Simon Lee @ GBR Hanra 2	
17:00				
17:30	Move to Invited Speaker Session			
18:00	Invited Speaker Jessica Pan @ GBR Hanra 1	Conference Dinner Preparation		
18:30	Invited Speaker David Green @ GBR Hanra 2			
19:00	Reception Preparation Welcome Speech			
19:30				
20:00	Cocktail Reception @ GBR Hanra 3	Conference Dinner @ GBR Hanra 3		
20:30				
21:00				

Please note exact times are indicative only and are subject to change.

Thursday 13 December 2018

10am onwards

Registration

Room: GBR Hanra entrance

13:45 - 14:15

Opening Speech

Room: GBR Hanra 1 & 2

14:15 - 15:15

Keynote Speech

Henry Farber 'How Important are Right-to Work Laws? Free-Riding and the Decline of Unions in the U.S.'

Room: GBR Hanra 1 & 2

15:15 - 15:45

Coffee Break

Room: GBR Hanra 3

15:45 - 17:45

Parallel Session 1

1-A Structural Change and Productivity

Room: Shilla 1

1-B Education Inputs and Outputs

Room: Shilla 2

1-C Housing, Retirement and Consumption

Room: Shilla 3

1-D Integration of Immigrants

Room: Shilla 4

1-E Job and Life Satisfaction

Room: Baekje 1

1-F Peer Effects and Networks

Room: Baekje 2

1-G Higher Education, Marriage and Labour Supply

Room: Baekje 3

1-H Demand Changes and Outcomes

Room: Baekje 4

1-I Wage Structure and Inequality

Room: Baekje 5

17:45 - 18:00

Move to Invited Sessions

18:00 - 19:00

Invited Sessions 1 & 2

Invited Session 1: Jessica Pan 'The Mommy Effect: Do Women Anticipate the Employment Effects of Motherhood?'

Room: GBR Hanra 1

Invited Session 2: David Green 'Benefiting from the Movement of Others: Emigration, Booms, and Local Labour Markets'

Room: GBR Hanra 2

CONFERENCE PROGRAMME

19:00 - 19:15 | **Reception Preparation**

19:15 - 19:30 | **Welcome Speech**

Youngjae Lim, Korea Development Institute, Senior Vice President
Joseph E. Zveglic, ADB, Deputy Chief Economist

Room: GBR Hanra 3

19:30 - 21:30 | **Cocktail Reception**

Room: GBR Hanra 3

Friday 14 December 2018

08:00 - 08:30 | **Coffee Break**

Room: GBR Hanra 3

08:30 - 10:30 | **Parallel Session 2**

2-A KDI Journal of Economic Policy Session: Employment and New Job Types

Room: Shilla 1

2-B Child Development and Inputs

Room: Shilla 2

2-C Migration, Remittances, and Microcredit

Room: Shilla 3

2-D Entrepreneurship

Room: Shilla 4

2-E Marriage and Divorce

Room: Baekje 1

2-F Non-Financial Incentives

Room: Baekje 2

2-G Consumption, Health and Outcomes

Room: Baekje 3

2-H Returns to Education

Room: Baekje 4

2-I Shocks and Cyclical Labour Demand

Room: Baekje 5

10:30 - 11:00 | **Coffee Break**

Room: GBR Hanra 3

11:00 - 13:00 | **Parallel Session 3**

3-A ADB Session: Productivity Issues in Asia

Room: Shilla 1

CONFERENCE PROGRAMME

3-B Health and Child Development

Room: Shilla 2

3-C Incentives and Delegation

Room: Shilla 3

3-D Female Education Choices and Labour Supply

Room: Shilla 4

3-E Rural-Urban Migration and Development

Room: Baekje 1

3-F Entry into Higher Education

Room: Baekje 2

3-G Responsiveness to Taxes

Room: Baekje 3

3-H Migrants, Natives and Policy

Room: Baekje 4

3-I Trade and Labour Demand

Room: Baekje 5

13:00 - 14:30 | **Lunch and Keynote Speech**

Richard Blundell 'Household Behaviour and the Dynamics of Inequality'

Room: GBR Hanra 1 & 2

14:30 - 16:00 | **Parallel Session 4**

4-A Inequality

Room: Shilla 1

4-B Education and Marriage

Room: Shilla 2

4-C Job Search and Outside Options

Room: Shilla 3

4-D Persistent Entry and Exposure Effects

Room: Shilla 4

4-E Labour Income and Work Effort

Room: Baekje 1

4-F Migration Choices and Adjustments

Room: Baekje 2

4-G Incentives and Performance

Room: Baekje 3

4-H Parental Leave Policies

Room: Baekje 4

4-I Higher Education and Mismatch

Room: Baekje 5

4-J Gender and Education

Room: Shilla 5

CONFERENCE PROGRAMME

16:00 - 16:30

Coffee Break

Room: GBR Hanra 3

16:30 - 17:30

Invited Sessions 3 & 4

Invited Session 3: Uta Schönberg 'Reallocation and the Minimum Wage – Evidence from Germany'

Room: GBR Hanra 1

Invited Session 4: Simon Lee 'An Econometric View of Algorithmic Subsampling'

Room: GBR Hanra 2

17:30 - 19:00

Conference Dinner Preparation

19:00 - 21:30

Conference Dinner

Changyong Rhee 'Digital Economy in Asia: Can It be a New Source of Growth?'

Room: GBR Hanra 3

Saturday 15 December 2018

08:00 - 08:30

Coffee Break

Room: GBR Hanra 3

08:30 - 10:30

Parallel Session 5

5-A Gender Gaps

Room: Shilla 1

5-B Intergenerational Mobility

Room: Shilla 2

5-C Job Loss, Re-Employment and Training

Room: Shilla 3

5-D Integration of Immigrants II

Room: Shilla 4

5-E Peer Effects in Education

Room: Baekje 1

5-F Policy Effects on Health

Room: Baekje 2

5-G Retirement and Social Security

Room: Baekje 3

5-H Informality

Room: Baekje 4

CONFERENCE PROGRAMME

5-I Son-Daughter Preferences

Room: Baekje 5

10:30 - 11:00

Coffee Break

Room: GBR Hanra 3

11:00 - 12:30

Parallel Session 6

6-A ADB Session: Technology and Labour

Room: Shilla 1

6-B Birth Order Effects

Room: Shilla 2

6-C Labour Productivity Across Sectors

Room: Shilla 3

6-D Female Labour Supply

Room: Shilla 4

6-E Human Capital Inputs and Outcomes

Room: Baekje 1

6-F Returns to Education II

Room: Baekje 2

6-G Jobs, Wage Growth and Unions

Room: Baekje 3

6-H Minimum Wage Effects

Room: Baekje 4

6-I Paternity Leave and the Gender Gap

Room: Baekje 5

6-J Korea Past and Present

Room: Shilla 5

12:30 - 13:00

Move to ADB Panel and Lunch

Room: GBR Hanra 3

13:00 - 14:30

Lunch and ADB Panel

ADB Panel: Demographic Transition, Labour Markets, and the Role of Technology in Asia and the Pacific

David Green, Aiko Kikkawa Takenaka, Paul Oyer and Abigail Payne

Room: GBR Hanra 1 & 2

14:30 - 15:00

End Speech and AASLE General Meeting

Room: GBR Hanra 1 & 2

PARALLEL SESSIONS

PAPERS AND LOCATIONS

Asian and Australasian
Society of Labour Economics
2018 Conference



PARALLEL SESSIONS

PARALLEL SESSION 1

Thursday 13 December 2018
15:45-17:45

1-A

Room: Shilla 1 Chair: Flavio Hafner

Structural Change and Productivity

Exit, Voice, and Development: An Empirical Investigation of Economic Transition in Colonial Korea

S. Youn Baek

Korea University, Republic of Korea

The Long Reach of Cotton in the U.S. South: Tenant Farming, Mechanization and Low-Skill Manufacturing

Yeonha Jung

Boston University, USA

The Effects of Labor Scarcity on the Rate and Direction of Technical Change: Evidence from a Natural Experiment

Muly San

New York University, USA

Specific Human Capital, Firm Productivity and Input Choices: Evidence from a Commuting Policy in France

Flavio Hafner

Universitat Pompeu Fabra, Spain

1-B

Room: Shilla 2 Chair: Michael Kidd

Education Inputs and Outputs

Accountability in Higher Education: The Impact of High-Stakes Testing

Enzo Brox* / **Michael Dörsam**

University of Konstanz, Germany

Incentive Design on MOOC: A Field Experiment

Jie Gong*¹

/ **Tracy Xiao Liu**² / **Jie Tang**³

¹National University of Singapore, Singapore

²Tsinghua University, China

³Tsinghua University, China

The Causal Effect of Cram School Regulation Policy

Jungmin Lee / **HyunJin Kwon***

Seoul National University, Republic of Korea

Age in Cohort, School Indiscipline and Crime: Regression-Discontinuity Estimates for Queensland

Tony Beaton¹ / **Michael Kidd**²

/ **Anthony Niu**³ / **Matteo Sandi**⁴

¹University of Queensland, Australia

²RMIT University, Australia

³RMIT University, Australia

⁴LSE, UK

The author with the star (*) next to their name is the presenting author.

PARALLEL SESSION 1

Thursday 13 December 2018
15:45-17:451-C **Housing, Retirement and Consumption** Room: Shilla 3 Chair: Kadir Atalay

A Matching Model of Co-residence with a Family Network: Empirical Evidence from China

Naijia Guo* / Xiaoyu Xia / Junsen Zhang

Chinese University of Hong Kong, Hong Kong

Consumption Responses to Income Shocks through Lottery Winning

Seonghoon Kim*¹ / Kanghyock Koh²¹Singapore Management University, Singapore
²UNIST, Republic of Korea

Labor Force Participation and Health Outcomes of Older People

Taehyun Ahn

Sogang University, Republic of Korea

The Effect of Retirement on Home Production: Evidence from Australia

Kadir Atalay* / Garry Barrett / Anita Staneva

University of Sydney, Australia

1-D **Integration of Immigrants** Room: Shilla 4 Chair: Matti Sarvimaki

"Tell Me What You Eat, I Will Tell You Who You Are": Migrants' Integration and Big Data on Food Consumption

Simone Bertoli¹ / Fosca Giannotti² / Riccardo Guidotti² / Dino Pedreschi⁴ / Hillel Rapoport³ / Biagio Speciale*³¹CERDI, Université Clermont Auvergne, France
²ISTI-CNR, Italy / ³Paris School of Economics, France
⁴Università di Pisa and ISTI-CNR, Italy

Ethnic Entrepreneurship and Assimilation Choice

Gergely Horvath*¹ / Rui Zhang¹¹International Business School Suzhou, Xi'an Jiaotong Liverpool University, China
²International School of Economics and Management, Capital University of Economics and Business, China

Should I Stay or Must I Go? Temporary Refugee Protection and Labor Market Outcomes

Birthe Larsen*¹ / Matilda Kilström³ / Elisabeth Olme2¹Copenhagen Business School, Denmark
²Stockholm University, Sweden
³IIES, Stockholm University, Sweden

PARALLEL SESSION 1

Thursday 13 December 2018
15:45-17:45

The First Rung of the Ladder: Entry Jobs, Ethnic Segregation and the Labor Market Integration of Immigrants

Laura Ansala^{1,5} / Olof Aslund^{2,3} / Matti Sarvimaki*^{1,4}¹Aalto University, Finland
²Uppsala University, Sweden / ³IFAU, Sweden
⁴VATT Institute for Economic Research, Finland
⁵Pellervo Economic Research, Finland1-E **Job and Life Satisfaction** Room: Baekje 1 Chair: Stephan Thomsen

Job Discretion and Job Satisfaction in Germany: Are the East German Workers Still Affected by the Experience under Communist Regime?

Kyungwon Lim

Korea Development Institute, Republic of Korea

The Dynamic Effect of Disability on Work and Subjective Well-being

Kostas Mavromaras*² / Melanie Jones¹ / Peter Sloane³ / Zhang Wei²¹Cardiff University, UK
²University of Adelaide, Australia
³Swansea University, UK

Time-Use, Unemployment, and Well-Being: An Empirical Analysis using British Time-Use Data

Thi Truong An Hoang* / Andreas Knabe

Otto von Guericke University, Germany

Work-Related Training and Subjective Well-Being: Estimating the Effect of Training Participation on Satisfaction, Worries, and Health in Germany

Jens Ruhose^{1,3} / Stephan Thomsen*¹ / Insa Weilage¹¹Leibniz Universität, Germany
²CESifo Munich, Germany
³ZEW Mannheim, Germany

PARALLEL SESSION 1

Thursday 13 December 2018
15:45-17:45**1-F** Room: Baekje 2 Chair: Carl Lin

Peer Effects and Networks

Multi-dimensional Social Networks and
Employment Opportunities: Evidence
from Rural India**Youjin Hahn*¹ / Jun Sung Kim²
/ Hee-Seung Yang³**¹Yonsei University, Republic of Korea
²Monash University, Australia
³KDI School of Public Policy and Management, Republic of KoreaSocial Network Structure and Risk
Sharing in Villages**Bin Jiang² / Jun Sung Kim²
/ Chuhui Li² / Ou Yang*¹**¹University of Melbourne, Australia
²Monash University, AustraliaWhen Peers Count: Evidence from Randomized
Peer Assignments in the Workplace**Sangyoon Park**
University of Hong Kong, Hong KongWorkplace Social Interaction and Wage
Premium**Shihe Fu¹ / Xiang Gao¹ / Carl Lin*²**
¹WISE, Xiamen University, China
²Bucknell University, USA**1-G** Room: Baekje 3 Chair: JungJae Park

Higher Education, Marriage and Labour Supply

The Effect of Culture on the Formation
of Gender Role Attitude: Evidence from
First- and Second-Generation Immigrant
Women in South Korea**Wonsik Ko**
Seoul National University,
Republic of KoreaHigher Education and Women's
Empowerment: Evidence from China's
Higher Education Expansion**Wei Si^{2,1}**
¹Stockholm University, Sweden
²ShanghaiTech University, ChinaPerformance Pay, The Marriage Market and
Rising Income Inequality in Taiwan**Shao-Hsun Keng*¹ / Peter Orazem²**
¹National University of Kaohsiung, Taiwan
²Iowa State University, USA

Social Norms and Fertility

JungJae Park*¹ / Junjian Yi¹ / Sunha Myong²
¹National University of Singapore, Singapore
²Singapore Management University, Singapore

PARALLEL SESSION 1

Thursday 13 December 2018
15:45-17:45**1-H** Room: Baekje 4 Chair: Hyeon Joo

Demand Changes and Outcomes

Capacity Utilization and Misallocation

**Mengqi Niu*¹
/ Kaiming Guo² / Jing Hang²**¹Jinan University, China
²Sun Yat-Sen University, ChinaIdentifying Labor Supply and Demand
Effect of Low Interest Rate on Job
Creations**Chang kon Choi**
Chonbuk National Univ., Republic of KoreaThe Economic Costs of Diplomatic
Conflict: Evidence from South Korea-
China THHAD Dispute**Hyejin Kim* / Jungmin Lee**
Seoul National University, Republic of KoreaDiffusion of E-Commerce and Retail Job
Apocalypse: Evidence from Credit Card
Data on Online Spending**Hyunbae Chun / Hailey Hyeon Joo*
/ Jisoo Kang / Yoon Soo Lee**
Sogang University, Republic of Korea**1-I** Room: Baekje 5 Chair: Balázs Reizer

Wage Structure and Inequality

Misallocation, Education Expansion and
Wage Inequality**Theodore Koutmeridis¹**
¹University of Glasgow, UK
²IZA, Germany

The Decline of Japanese Labor Share

Koyo Miyoshi
aichi-gakuin university, JapanTop Earned Incomes, Workers' Wages,
Top Capital Incomes, and Income Inequality**Niroth Chhy**
Kobe University, JapanWage Structure, Employment and
Efficiency**Balázs Reizer**
CERS-HAS, Hungary

PARALLEL SESSION 2

Friday 14 December 2018
08:30-10:30

2-A Room: Shilla 1 Chair: Siwook Lee

**KDI Journal of Economic Policy Session:
Recent Structural Changes and Outcomes**Long-term Effects of Labor Market Entry
Conditions: The Case of Korea **Joseph Han**
Korea Development Institute, Republic of KoreaSpillover Effects of Dual-Income
Households on the Low-Skilled Labor
Markets **Jongkwan Lee*¹ / Myungkyu Shim²
/ Hee-Seung Yang³**
¹Korea Development Institute, Republic of Korea
²Sogang University, Republic of Korea
³KDI School of Public Policy and Management, Republic of KoreaThe Value of Commuting Time and
Efficient Job Assignment in the Gig
Economy **Paul Oyer*¹ / Yichen Su²**
¹Stanford University, USA
²Federal Reserve Bank of Dallas, USAJob Security Perceptions and Its Effect
on Wage Growth **Rochelle Guttman* / James Foster**
Reserve Bank of Australia, Australia

2-B Room: Shilla 2 Chair: Robert Breunig

Child Development and InputsBilingual Advantage in Non-Cognitive
Skills **Choon sung Lim*¹ / Tracy Regan²**
¹Bank of Korea, Republic of Korea
²Boston College, USADynamic Effects of Age at School Entry:
What Roles Do Parents, Teachers, and
Peers Play? **Hirotake Ito¹ / Makiko Nakamuro¹
/ Shintaro Yamaguchi*²**
¹Keio University, Japan
²University of Tokyo, JapanHow Do Parents Decide Their Child's Quality
and Quantity?: Evidence from the Expansion
of Child Benefit Policy in Japan **Shinsuke Asakawa**
Osaka University, JapanImpact of Playgrounds on Property Prices:
Evidence from Australia **Robert Breunig*¹ / Syed Hasan²
/ Kym Whiteoak³**
¹Australian National University, Australia
²Massey University, New Zealand
³RM Consulting Group, Australia

PARALLEL SESSION 2

Friday 14 December 2018
08:30-10:30

2-C Room: Shilla 3 Chair: Sarah Pearlman

Migration, Remittances, and MicrocreditMicrocredit, Upward Mobility and Labor
Market Outcomes: The new evidence from
Thailand Village Funds **Patima Chongcharoentanawat*
/ Franziska Gassmann
/ Pierre Mohnen**
UNU-MERIT, Maastricht University, The NetherlandsNepal's Civil War and the Changing Sources
of Income: The Role of Sectoral Shifts and
Remittances in Mitigation and Recovery **Cynthia Bansak*^{1,2}
/ Brian Chezum¹ / Dilip Ratha³**
¹St. Lawrence University, USA
²IZA Fellow, Germany
³World Bank, USARemittances and Labour Supply in Peru - a
Gendered Perspective **Kristin Paetz**
University of Hamburg, GermanyReverse Migration Trends and Local Labor
Markets **Emily Conover¹ / Melanie Khamis²
/ Sarah Pearlman*³**
¹Hamilton College, USA
²Wesleyan University, USA
³Vassar College, USA

2-D Room: Shilla 4 Chair: Jinyoung Kim

EntrepreneurshipDigitalisation and the Performance of
Micro, Small Enterprises: A Case Study in
Yogyakarta, Indonesia **Anna Falentina*
/ Budy Resosudarmo**
Australian National University, AustraliaEmployment, Productivity and Wage
Effects of FDI from Tax Havens **Solomiya Shpak**
George Mason University, USAHigh-Growth Entrepreneurship **David Brown^{1,3} / John Earle^{2,3}
/ Mee Jung Kim*^{1,2} / Kyung Min Lee²**
¹U.S. Census Bureau, USA
²George Mason University, USA / ³Institute for the Study of Labor, GermanyJack of Fewer Trades: Evidence of the
Evolution of Specialization in Research **Jinyoung Kim*¹ / Kanghyock Koh²**
¹Korea University, Republic of Korea
²UNIST, Republic of Korea

PARALLEL SESSION 2

Friday 14 December 2018
08:30-10:30**2-E** Room: Baekje 1 Chair: So Yoon Ahn
Marriage and Divorce

A Structure Study of Women's Pre-divorce Behavior: the Role of Learning about Husbands

Kyoung Eun Kim
Korea Information Society Development Institute,
Republic of Korea

Couple Differences in Locus of Control and Marital Satisfaction

Wang-Sheng Lee*^{1,3} / Terra McKinnish^{2,3}
¹Deakin University, Australia
²University of Colorado Boulder, USA / ³IZA, Germany

Divorced in a Flash: The Effect of the Administrative Divorce Option on Marital Stability in the Netherlands

Jan Kabatek
The University of Melbourne, Australia

Matching Across Markets: Theory and Evidence on Cross-Border Marriage

So Yoon Ahn^{1,2}
¹Columbia University, USA
²University of Illinois at Chicago, USA**2-F** Room: Baekje 2 Chair: Liang Choon Wang
Non-Financial Incentives

Examining the Link Between Health Measures, Management Practices and Establishment Performance

Marie-Christine Laible* / Sandra Broszeit
Institute for Employment Research, Germany

Incentivizing Local Governance: Public Grants and Information Campaigns as Performance-based Rewards for Elected Politicians

Ghazala Mansuri² / Nethra Palaniswamy² / Vijayendra Rao² / Slesh A. Shrestha*¹
¹National University of Singapore, Singapore
²World Bank, USA

Mission of the Company, Prosocial Attitudes and Job Preferences: a Stated-Preference Experiment

Arjan Non^{1,2} / Ingrid Rohde¹ / Andries De Grip*^{1,3} / Thomas Dohmen^{1,2}
¹Maastricht University, The Netherlands
²University of Bonn, Germany / ³IZA, Germany

Can public recognition reward backfire? Field experimental evidence on the retention and performance of volunteers with social-image concerns

Asadul Islam¹ / Abdul Malek² / Sakiba Tasneem¹ / Liang Choon Wang*¹
¹Monash University, Australia
²BRAC, Bangladesh

PARALLEL SESSION 2

Friday 14 December 2018
08:30-10:30**2-G** Room: Baekje 3 Chair: WooRam Park
Consumption, Health and Outcomes

A Bit of Salt, A Trace of Life: Long-Run Impacts of Salt Iodization in China

Zichen Deng*^{1,2} / Maarten Lindeboom¹
¹Vrije Universiteit Amsterdam, The Netherlands
²Tinbergen Institute, The Netherlands

It's in Your Genes: How Genes Explain Alcohol Consumption and Labor-Market Outcomes

Jungmin Lee³ / Izumi Yokoyama² / Daiji Kawaguchi*¹
¹University of Tokyo, Japan
²Hitotsubashi University, Japan / ³Seoul National University, Japan

Nutrition, Health, and Human Capital Development: Evidence from South Korea, 1946-1977

Chulhee Lee
Seoul National University, Republic of Korea

The Impact of Tobacco Control Policies on Household Expenditure on Tobacco Products: Evidence from Regression Discontinuity Design

WooRam Park*¹ / Jisun Baek²
¹Korea Development Institute, Republic of Korea
²KDI School of Public Policy and Management, Republic of Korea**2-H** Room: Baekje 4 Chair: Xuan Jiang
Returns to Education

Long-Term Social Benefits of Early Childhood Education: Evidence from a Large-Scale Expansion of Kindergartens

Michihito Ando¹ / Hiroaki Mori*² / Shintaro Yamaguchi³
¹Rikkyo University, Japan
²Hitotsubashi University, Japan
³University of Tokyo, Japan

Returns to Education Among the Informally Employed in Thailand

Tanthaka Vivatsurakit
Chulalongkorn University, Thailand

The Returns to Postgraduate Education in Japan

Fumihiko Suga
Kyushu University, Japan

When Opportunity Knocks: China's Open Door Policy and Declining Educational Attainment

Xuan Jiang*¹ / Kendall Kennedy² / Jiatong Zhong³
¹The Ohio State University, USA
²Mississippi State University, USA
³Purdue University, USA

PARALLEL SESSION 2

Friday 14 December 2018
08:30-10:302-1 Room: Baekje 5 Chair: Changkeun Lee
Shocks and Cyclical Labour DemandThe Impact of Seasonal Rain on Child Labor
and the Heterogenous Effect in Distinct
Areas: Finding from Cambodia**Soyoung Kim**
University of Tokyo, JapanThe Role of Quits and Replacement Hiring in
the Cyclical of Job Openings**Yusuf Mercan*^{2,1}**
/ Benjamin Schoefer¹
¹UC Berkeley, USA
²U Melbourne, AustraliaUnemployment Insurance and Labour
Productivity over the Business Cycle**Similan Rujiwattanapong^{1,2}**
¹Aarhus University, Denmark
²Centre for Macroeconomics, UKWage Rigidity during the Great Depression:
Plant-level Evidence**Changkeun Lee**
Korea Development Insitute, Republic of Korea

PARALLEL SESSION 3

Friday 14 December 2018
11:00-13:003-A Room: Shilla 1 Chair: Donghyun Park
ADB Session: Productivity Issues in AsiaExpected Work Experience and the Gender
Wage Gap: Evidence from the Philippines**Joseph Zveglic^{*1}**
/ Yana Rodgers² / Editha Lavina¹
¹Asian Development Bank, The Philippines
²Rutgers University, USAPromoting Labor Participation and Better
Deployment of Skills in Indonesia**Kiyoshi Taniguchi***
/ Ruth Francisco / Daryll Naval
Asian Development Bank, The PhilippinesThe Servitization of Manufacturing in Asia:
Redefining the Sources of Labor Productivity**Valerie Mercer-Blackman*¹**
/ Christine Ablaza²
¹Asian Development Bank, The Philippines
²University of Queensland, AustraliaInfrastructure as Policy Tool to Reduce
Inequality, Amass Human Capital, and
Foster Economic Growth**Donghyun Park*¹**
/ Shu Tian¹ / Sanjay Peters²
¹Asian Development Bank, The Philippines
²Columbia University, USA3-B Room: Shilla 2 Chair: Ming-Jen Lin
Health and Child DevelopmentEvaluating Long-Term Impacts of Sustained
Mass Deworming:
South Korea 1969-1995**Taejong Kim¹ / Jungho Kim*^{2,3}**
¹KDI School of Public Policy
and Management, Republic of Korea
²Ajou University, Republic of Korea / ³IZA, GermanyStunted by the Smoke? Household
Environment and Child Development in
Indonesia**Younoh Kim*¹ / James Manley²**
/ Vlad Radoias¹
¹Sam Houston State University, USA
²Towson University, USATerrorism and Early Childhood Health
Outcomes: Evidence from Pakistan**Daniel Grossman²**
/ Umair Khalil*¹ / Arijit Ray²
¹Monash University, Australia
²West Virginia University, USAThe Impact of Air Pollution on Infant Health
in Taiwan**Hsiu-Han Shih*¹ / Ming-Jen Lin²**
¹Tunghai University, Taiwan
²National Taiwan University, Taiwan

PARALLEL SESSION 3

Friday 14 December 2018
11:00-13:00**3-C** Room: Shilla 3 Chair: Hee-Seung Yang

Incentives and Delegation

Delegation to a Group

Sebastian Fehrer / Moritz Janas*
University of Konstanz, GermanyDo Teachers Matter for Academic
Achievement of Students? Evidence
from Administrative Panel Data**Ryuichi Tanaka*¹ / Shun-ichiro Bessho²**
/ Akira Kawamura³ / Haruko Noguchi³
/ Koichi Ushijima⁴¹University of Tokyo, Japan / ²Ministry of Finance, Japan
³Waseda University, Japan / ⁴University of Tsukuba, JapanHow Good Managers Steer Their
Projects: Using Value-Added
Measures of Manager Quality**Hideo Owan¹ / Ruo Shangguan*²**
¹School of Political Science and Economics,
Waseda University, Japan
²Graduate School of Economics,
University of Tokyo, JapanTeacher Monitoring and School
Performance: Evidence from Public
Schools in Pakistan**Booyuel Kim / Inayat Ullah**
/ Hee-Seung Yang*
KDI School of Public Policy and Management,
Republic of Korea**3-D** Room: Shilla 4 Chair: Yong Yoon

Female Education Choices and Labour Supply

Labor Market Policies Targeted at Low-
Employability Populations:
A Case Study of Israeli Ultra-Religious
Women**Yael Goldfarb**
/ Shoshana Neuman*
Bar-Ilan University, IsraelThe Impact of After-School Care on
Maternal Labor Market Outcomes**Nagham Sayour*¹**
/ Ailin He²
¹Lebanese American University, Lebanon
²McGill University, CanadaWhy Female Scientists Eschew
Scientific and Engineering Fields?
Perspectives from Human Capital
Theory**Ya-Pin Lyu**
National Applied Research Laboratories, Taiwan

PARALLEL SESSION 3

Friday 14 December 2018
11:00-13:00Is Thailand's Labor Market Really
"Woman Friendly"? Revisiting the
Declining Gender Wage Gap**Sasiwimon W. Paweenawat¹**
/ Jessica Vechbanyongratana²
/ Yong Yoon*²¹University of the Thai Chamber of Commerce, Thailand
²Chulalongkorn University, Thailand**3-E** Room: Baekje 1 Chair: Chunbing Xing

Rural-Urban Migration and Development

Dynamic Wage Gap between Urban Labor
Force and Rural Migrants in Chinese
Cities**Dandan Zhang**
National School of Development,
Peking University, ChinaEconomic Assimilation of Rural-urban
Migrant in the Absence of Internal
Migration Restriction Policy: Empirical
Evidence from four Indonesian Cities**Rus'an Nasrudin*^{1,2}**
/ Budy P. Resosudarmo¹
¹Australian National University, Australia
²University of Indonesia, Indonesia

Firms and Regional Favoritism

Tien Manh Vu*^{1,2}
/ Hiroyuki Yamada³
¹Asian Growth Research Institute, Japan
²Osaka University, Japan, ³Keio University, JapanMoney or Marriage? The Migration of
China's Rural Women**Chunbing Xing***
/ Yan Sun
Beijing Normal University, China

PARALLEL SESSION 3

Friday 14 December 2018
11:00-13:00**3-F** Room: Baekje 2 Chair: Sok Chul Hong

Entry into Higher Education

How to Reach a Top College? Middle School Time Use and College Entrance Outcomes

Robert Rudolf* / **Kyuwon Kang**
Korea University, Republic of Korea

Self-Financing, Parental Transfer, and College Education

Sunha Myong* / **Jungho Lee**
Singapore Management University, Singapore

Subjective Completion Beliefs and the Demand for Post-Secondary Education

Kevin Staub² / **Johannes Kunz*¹**
¹Monash University, Australia
²University of Melbourne, Australia

Spreading Knowledge in Exile

Sok Chul Hong*¹
/ **Yangkeun Yun¹** / **Christopher Paik²**
¹Seoul National University, Republic of Korea
²New York University Abu Dhabi, United Arab Emirates**3-G** Room: Baekje 3 Chair: Ross Hickey

Responsiveness to Taxes

Does Payroll Tax Affect Firm Behaviour?

Ben Ralston
Australian Treasury, Australia

Nudging Businesses to Pay Their Taxes: Does Timing Matter?

Christian Gillitzer²
/ **Mathias Sinning*¹**
¹Australian National University, Australia
²University of Sydney, Australia

Tax Uncertainty and Business Activity

Jungho Lee* / **Jianhuan Xu**
Singapore Management University, Singapore

The Effect of Tax Price on Donations: Evidence from Canada

Ross Hickey*^{1,4} / **Bradley Minaker²**
/ **Joanne Roberts³** / **Abigail Payne⁴**
/ **Justin Smith⁵**
¹University of British Columbia, Canada
²McMaster University, Canada
³Yale-NUS College, Singapore
⁴Melbourne Institute of Applied Economic and Social Research, Australia
⁵Wilfrid Laurier University, Canada

PARALLEL SESSION 3

Friday 14 December 2018
11:00-13:00**3-H** Room: Baekje 4 Chair: Jinwook Hur

Migrants, Natives and Policy

An Analysis on the Employment Relationship Between Foreign Workers and Domestic Ones in Korea

Chanyoung Lee
Chonnam National University,
Republic of Korea

Do Immigrants Crowd Out Natives from Their Residential Neighborhoods?: Evidence from South Korea

Joseph Han¹ / **Jinwook Hur¹**
/ **Jongkwan Lee¹** / **Hyunjoo Yang*²**
¹Korea Development Institute, Republic of Korea
²Incheon National University, Republic of Korea

Information Effect and Preference for Migration Policy

Keisuke Kawata
University of Tokyo, Japan

Immigration to Korea: A Fiscal Boon or Burden?

Jinwook Hur
Korea Development Institute, Republic of Korea**3-I** Room: Baekje 5 Chair: Michael Coelli

Trade and Labour Demand

Heterogeneous Labor Demand in the Colombian Manufacturing Sector

Luis E. Arango*¹
/ **Francesca Castellani²**
/ **Nataly Obando³**¹Banco de la República, Colombia
²Inter-American Development Bank, USA
³Ministry of Education, Colombia

Labor Market Effects of Foreign Production via Value Chains: Evidence from Japanese Firms Hit by the 2011 Thailand Floods

Daisuke Adachi*¹ / **Yukiko Saito²**
¹Yale University, USA
²Research Institute of Economy Trade and Industry, Japan

Learning by Exporting: The Role of Competition

Deasy D P Pane^{1,2}
¹Australian National University, Australia
²National Development Planning Agency, Indonesia

The Dragon Down Under: The Regional Labour Market Impact of Growth in Chinese Imports

James Maccarrone / **Jeff Borland**
/ **Michael Coelli***
University of Melbourne, Australia

PARALLEL SESSION 4

Friday 14 December 2018
14:30-16:00**4-A** Room: Shilla 1 Chair: Jisoo Hwang
Inequality

Can Economic Growth be Inclusive and Immiserising? The Kuznets Hypothesis and 'Premature Deindustrialisation'

Arief Anshory Yusuf¹
/ **Andrew Sumner²**
/ **Ekki Syamsulhakim^{*1}**¹Department of Economics,
Universitas Padjadjaran, Indonesia
²Department of International Development,
King's College, UK

Quantifying the Contribution of a Subpopulation to Inequality

Carlos Gradín¹¹UNU-WIDER, Finland
²University of Vigo, Spain

The Effect of Longevity on Intergenerational Policies and Fertility

Jisoo Hwang^{*1}
/ **Seok Ki Kim²**¹Hankuk University of Foreign Studies, Republic of Korea
²Korea Institute of Finance, Republic of Korea**4-B** Room: Shilla 2 Chair: Songtao Yang
Education and Marriage

Better Educated, Fewer Divorces: The Impact of College Education Quality on Marriage Outcomes

Danqing Shen^{1,2}¹Shandong University, China
²Purdue University, USA

Field of Study and Family Outcomes

Elisabeth Artmann^{*1,4}
/ **Nadine Ketel²**
/ **Hessel Oosterbeek^{2,4}**
/ **Bas van der Klaauw^{1,4}**¹Vrije Universiteit Amsterdam, The Netherlands
²University of Amsterdam, The Netherlands
³University of Gothenburg, Sweden
⁴Tinbergen Institute, The Netherlands

More Schooling, Younger Husbands? Estimating the Effects of Women's Education on Their Marriage Outcomes

Haoming Liu¹
/ **Songtao Yang^{*2}**¹Natioanl University of Singapore, Singapore
²South China University of Technology, China

PARALLEL SESSION 4

Friday 14 December 2018
14:30-16:00**4-C** Room: Shilla 3 Chair: Hiroko Okudaira
Job Search and Outside Options

The Impact of Financial Pressures on Unemployed Job Search and Labor Market Outcomes

Ruud Gerards^{*1}
/ **Riccardo Welters^{3,2}**¹Maastricht University, The Netherlands
²University of Newcastle, Australia
³James Cook University, Australia

The Puzzle of Educated Unemployment in West Africa

Esther Mirjam Girsberger^{*1}
/ **Romuald Meango²**¹University of Lausanne, Switzerland
²Max-Planck Institute for Social Law and Social Policy, Germany

Regulating the Timing of Job Search: Evidence from New College Graduates in Japan

Hiroko Okudaira

Doshisha University, Japan

4-D Room: Shilla 4 Chair: Hyelim Son
Persistent Entry and Exposure Effects

Place, Jobs, Peers and the Teenage Years: Exposure Effects and Intergenerational Mobility

Nathan Deutscher

Australian National University, Australia

The Cohort Size Effects in Promotion and Pay: Evidence from Personnel Data

Shota Araki^{*1}/ **Takao Kato²**/ **Daiji Kawaguchi³**/ **Hideo Owan⁴**¹Research Institute of Economy, Trade and Industry, Japan
²Colgate University, USA
³University of Tokyo, Japan
⁴Waseda University, Japan

The Long-Term Effects of Labor Market Entry in a Recession: Evidence from the 1997-1998 Asian Financial Crisis

Hyelim Son^{*1}
/ **Eleanor Jawon Choi²**
/ **Jaewoo Choi³**¹University of Seoul, Republic of Korea
²Hanyang University, Republic of Korea
³Korea Development Institute, Republic of Korea

PARALLEL SESSION 4

Friday 14 December 2018
14:30-16:00

4-E Room: Baekje 1 Chair: Nayoung Lee

Labour Income and Work Effort

Temperature and the Allocation of Time

Thuy Doan^{1,2}¹University of Hawaii at Manoa, USA
²Open University Ho Chi Minh City, Viet NamThe Impact of SNAP Work Requirements
on ABAWDs' Labor Supply

Jeehoon Han

University of Chicago, USA

Heterogeneous Income Profiles Model
with Fixed Effects: Incorporating Labor
Income ShocksNayoung Lee^{*1}
/ Hyungsik Moon^{2,3}¹University of Cincinnati, USA
²University of Southern California, USA
³Yonsei University, Republic of Korea

4-F Room: Baekje 2 Chair: David Jaeger

Migration Choices and Adjustments

Easy Come, Easy Go? Economic
Shocks, Labor Migration and the Family
Left BehindAndré Gröger^{1,2}¹Universitat Autònoma de Barcelona, Spain
²Barcelona Graduate School of Economics, SpainHow Do Primary School Choices Affect
High School Opportunities? Evidence
from China's Migrant ChildrenYuanyuan Chen¹
/ Shuaizhang Feng²
/ Yujie Han^{*2}¹School of Economics, Shanghai University of
Finance and Economics, China
²Institute for Economic & Social Research,
Jinan University, ChinaShift-Share Instruments and Dynamic
Adjustments: The Case of ImmigrationDavid Jaeger^{*1,2}
/ Joakim Ruist^{5,4}
/ Jan Stuhler^{6,3}¹CUNY Graduate Center, USA / ²NBER, USA
³IZA, Germany / ⁴CREAM, UK
⁵Gothenburg University, Sweden
⁶Universidad Carlos III, Spain

PARALLEL SESSION 4

Friday 14 December 2018
14:30-16:00

4-G Room: Baekje 3 Chair: Yingchao Zhang

Incentives and Performance

Competitive Compensation and
Subjective Well-being: The Impact of
Culture and GenderSeEun Jung^{*1}
/ Radu Vranceanu²¹Inha University, Republic of Korea
²ESSEC Business School, FranceHow Informative Is Three Hundred
Sixty Degree Evaluation?Kiho Muroga^{*1}
/ Hideo Owan²¹University of Tokyo, Japan
²Waseda University, JapanWho Wins Corporate Tournaments
in China? Evidence from CEO
AppointmentsYingchao Zhang
University of Vienna, Austria

4-H Room: Baekje 4 Chair: YoungWook Lee

Parental Leave Policies

Long-term Effects of Parental Leave
Policy on Maternal EmploymentTaiyo Fukai^{*}
/ Takahiro Toriyabe
University of Tokyo, JapanParental Leave and Women's
EmploymentJungho Kim^{1,2}
¹Ajou University, Republic of Korea
²IZA, GermanyThe Effects of Parental Leave Benefits
on Mothers' Return to Work: Evidence
from KoreaYoungWook Lee
Korea Development Institute, Republic of Korea

PARALLEL SESSION 4

Friday 14 December 2018
14:30-16:004-I Room: Baekje 5 Chair: Achmad Maulana
Higher Education and MismatchEstimating the Returns to Educational Mismatch with Panel Data: The Role of Unobserved Heterogeneity Revisited
Marco Pecoraro
University of Neuchatel, SwitzerlandEducation Attainment and Overeducation Trend in South Korea
Han Byul Lee
Seoul National University, Republic of KoreaThe Impact of Education on Household Labor Allocation and Earning: Evidence from Rural Indonesia
Achmad Maulana^{*3,1}
/ **Elan Satriawan**^{2,3}
/ **Abror Pradana**³
¹Universitas Padjadjaran, Indonesia
²Universitas Gadjah Mada, Indonesia
³National Team for Poverty Acceleration (TNP2K), Indonesia4-J Room: Shilla 5 Chair: Elisabetta Gentile
Gender and EducationSelection, Gender and the Impact of Schooling Type in the Dhaka Slums
John Ham^{1,2}
/ **Saima Khan**^{*3}
¹NYU Abu Dhabi, United Arab Emirates
²NYU Wagner School, USA
³National Univ of Singapore, SingaporeParental Gender Norms and College Major Choice
Kim Hyewon
/ **Lee Chulhee**
/ **Oh Seojung**^{*}
Seoul National University, Republic of KoreaTaking Education to the Next Level: What Can Be Learned from Benchmarking Education Across Countries?
Natalie Chun
/ **Elisabetta Gentile**^{*}
/ **Lilac Florentino**
Asian Development Bank, The Philippines

PARALLEL SESSION 5

Saturday 15 December 2018
08:30-10:305-A Room: Shilla 1 Chair: Per-Anders Edin
Gender GapsAnticipation Effects of a Board Room Gender Quota Law: Evidence from a Credible Threat in Sweden
Joakim Jansson^{*1,2} / **Björn Tyrefors**^{2,1}
¹Department of Economics
Stockholm University, Sweden
²Research Institute of Industrial Economics (IFN), SwedenCompetitiveness, Risk Attitudes, and the Gender Gap in Math Achievement
Masayuki Yagasaki^{*1}
/ **Makiko Nakamuro**²
¹University of Tokyo, Japan
²Keio University, JapanFinancial Risk-taking and the Gender Wage Gap
Per-Anders Edin^{*1,2} / **Håkan Selin**²
¹Uppsala University, Sweden
²IFAU, Sweden5-B Room: Shilla 2 Chair: Nathan Deutscher
Intergenerational Mobility"The Red and The Black" in the Twenty-First Century: the long-term effects of parental socioeconomic status on children's income in urban China
Zhaopeng Qu^{*1}
/ **Xiaoguang Ling**² / **Shi Li**^{3,4}
¹Nanjing University, China
²Oslo University, Norway
³Beijing Normal University, China / ⁴IZA, GermanyEconomic Preferences Within Families: Large-scale Experimental Evidence from Bangladesh
Shyamal Chowdhury
University of Sydney, AustraliaRaising Aspirations to Raise Intergenerational Mobility? The Role of Aspirations of Children, Parents and Teachers
Warn N. Lekfuangfu^{*1,2}
/ **Reto Odermatt**^{3,4}
¹Chulalongkorn University, Thailand
²Centre for Economic Performances, UK
³Center for Decision Research,
University of Chicago Booth School of Business, USA
⁴Center for Research in Economics and Well-Being,
University of Basel, Switzerland

PARALLEL SESSION 5

Saturday 15 December 2018
08:30-10:305-C **Room: Shilla 3** **Chair: Martin Olsson**
Job Loss, Re-Employment and Training

Prison Work and Recidivism

Giulio Zanella

University of Adelaide, Australia

End-of-Year Spending and the Long-Run
Employment Effects of Training Programs
for the Unemployed**Bernd Fitzenberger*¹**/ **Marina Furdas¹ / Christoph Sajons²**¹Humboldt-University, Germany²University of Mannheim, GermanyDisplacement Effects in Manufacturing:
The Role of Firms**Ines Helm¹ / Alice Kügler*^{2,3}**/ **Uta Schönberg^{2,3}**¹Stockholm University, Sweden²University College London, UK³Centre for Research and Analysis of Migration, UK⁴Institute for Employment Research, GermanyWhat Is the Cost of Privatization for
Workers?**Martin Olsson* / Joacim Tåg**

Research Institute of Industrial Economics (IFN), Sweden

5-D **Room: Shilla 4** **Chair: Young-Chul Kim**
Integration of Immigrants IIBeyond the Average: Ethnic Capital
Heterogeneity and Intergenerational
Transmission of Education**Tanika Chakraborty^{1,2}**/ **Olga Nottmeyer² / Simone Schueller^{3,4}**/ **Klaus F. Zimmermann*^{6,7}**¹Indian Institute of Management, India²IZA, Germany / ³Ifo Institute, Germany⁴FBK-IRVAPP, Italy / ⁵CESifo, Germany⁶GLO, Germany / ⁷UNU-MERIT, GermanyComing to Germany: Pre-migration
Language Skills, Job Search and Labor
Market Outcomes**Huy Le Quang**

Institute for Employment Research, Germany

The Economic Assimilation of Immigrants
in Australia: A Reappraisal**Nikita Sharma**

The University of Queensland, Australia

To Be, or Not to Be: Stereotypes,
Identity Choice and Group Inequality**Young-Chul Kim*¹ / Glenn Loury²**¹Sogang University, Republic of Korea²Brown University, USA

PARALLEL SESSION 5

Saturday 15 December 2018
08:30-10:305-E **Room: Baekje 1** **Chair: Jane Friesen**
Peer Effects in EducationBig Fish, Small Pond: The Effect of Rank
at Entry on Post-Secondary Outcomes**A. Abigail Payne*¹ / Justin Smith²**¹University of Melbourne, Australia²Wilfred Laurier University, CanadaDoes Peer Ability Affect Education
Choices?**Luca Facchinello**

SMU, Singapore

Information Feedback in Relative
Grading: Evidence from a Field
Experiment**Shinya Kajitani¹**/ **Keiichi Morimoto² / Shiba Suzuki*³**¹Kyoto Sangyo University, Japan²Meisei University, Japan³Seikei University, JapanSorting, Peer Effects and School
Effectiveness in Private and Public
Schools**Ricardo Meilman Cohn**/ **Jane Friesen* / Simon Woodcock**

Simon Fraser University, Canada

5-F **Room: Baekje 2** **Chair: Miki Kohara**
Policy Effects on HealthMental Health and Income Support
Duration for Young Australians: Evidence
from Longitudinal Administrative Data**Agnieszka Nelson**/ **Paul Amores***/ **Robert Breunig**

Australian National University, Australia

The Affordable Care Act, Parents' Labor
Market Outcomes, and Young Adults'
Medical Expenditure**Kanghyock Koh**

UNIST, Republic of Korea

An Investigation on the Relationship
between Economic Cycles and Health**Byeo Rhee Bak**

Seoul National University, Republic of Korea

The Effect of the Law Reform Raising
Overtime Premium on Workers' Health:
the Japanese Case**Miki Kohara***/ **Taisei Nouda**

Osaka University, Japan

PARALLEL SESSION 5

Saturday 15 December 2018
08:30-10:30

5-G Room: Baekje 3 Chair: GaYoung Park

Retirement and Social Security

Did Government Intervention on Firm's
Employment Policies Have an Effect on
the Employment of Elderly Workers?

Yoshinori Nishimura

Chiba Institute of Technology, Japan

Housing Wealth and Retirement -
Evidence from Korean Longitudinal Study
of Ageing

Jongwoo Chung

Seoul National University, Republic of Korea

Occupational Retirement and Social
Security Reform: the Roles of Physical
and Cognitive Health

Jiayi Wen

Xiamen University, China

Subsidizing Elderly Care: Evidence from
the Korean Long-term Care Insurance

GaYoung Park*

/ Youjin Hahn

Yonsei University, Republic of Korea

5-H Room: Baekje 4 Chair: Jochen Kluge

Informality

Do Anti-Discrimination Laws Alleviate
Labor Market Duality? Quasi-
Experimental Evidence from Korea

Hoon Choi

University of Barcelona, Spain

Heterogeneity in Informal Employment:
From Causes to Consequences

Christine Ablaza

The University of Queensland, Australia

The Effect of Non-regular Jobs
on Labor Income Inequality:
Decomposition into Wage and Working
Hours

Inyoung Hwang

Seoul National University, Republic of Korea

The Effectiveness of Interventions to
Reduce Informality in Low- and Middle
Income CountriesJochen Kluge^{1,2}¹Humboldt-Universität zu Berlin, Germany²RWI, Germany

PARALLEL SESSION 5

Saturday 15 December 2018
08:30-10:30

5-I Room: Baekje 5 Chair: Chunbing Xing

Son-Daughter Preferences

Adolescent Political Exposure and Gender
Preferences in Adulthood:Yang Yao^{*1}/ Wuyue You²A Study of Chinese Counties during 1950-
1990¹Peking University, China²Central University of Finance and Economics, ChinaIntergenerational Transmission of Culture:
Evidence from Spatiotemporal Variation of
Son Preference in Korea

Seik Kim*

/ Sam-Ho Lee

Korea University, Republic of Korea

Son Preference and Birth Outcomes for
Girls: First Evidence Using Sex Ratio at
Birth

Hyunkuk Cho

Yeungnam University, Republic of Korea

Son Preference and Human Capital
Investment Among China's Rural-Urban
Migrant HouseholdsCarl Lin^{1,3}/ Yan Sun²/ Chunbing Xing^{*2,3}¹Bucknell University, USA²Beijing Normal University, China³IZA, Germany

PARALLEL SESSION 6

Saturday 15 December 2018
11:00-12:30**6-A** Room: Shilla 1 Chair: Lakshman Nagraj Rao**ADB Session: Technology and Labour**New Technology and Emerging
Occupations: Evidence from Asia**Sameer Khatiwada*** / **John Paul**
/ **Flaminiano** / **Mia Kim Veloso**
Asian Development Bank, The PhilippinesThe Employment Effects of Technological
Innovation and Participation in Global
Value Chains: Evidence from Asia**Gaaitzen de Vries¹** / **Donald Bertulfo²**
/ **Elisabetta Gentile*²**
¹University of Groningen, The Netherlands
²Asian Development Bank, The PhilippinesThe Impact of Electronic Data Collection
on Labor Force Statistics**Lakshman Nagraj Rao*** / **Dave Pipon**
Asian Development Bank, The Philippines**6-B** Room: Shilla 2 Chair: Marian Vidal-Fernandez**Birth Order Effects**Parental Decision on Additional Birth
and Burden on Child Quality**Ahram Moon*¹**
/ **Ahyoung Song²** / **Yusun Cho³**
¹Tianjin University of Finance and Economics, China
²Gachon University, Republic of Korea
³University of Southern California, USAThe Effects of Birth Order on Adult
Outcomes: Evidence from Australia**Gordon Menzies¹**
/ **Olena Stavrunova*¹** / **Oleg Yerokhin²**
¹University of Technology Sydney, Australia
²University of Wollongong, AustraliaThe Evolution of Birth Order Effect through
Generations**Ana Nuevo-Chiquero^{2,4}**
/ **Lee K. Lehmann^{1,4}**
/ **Marian Vidal-Fernandez*^{1,4}**
¹University of Sydney, Australia
²University of Edinburgh, UK
³Analysis Group, USA
⁴IZA, Germany

PARALLEL SESSION 6

Saturday 15 December 2018
11:00-12:30**6-C** Room: Shilla 3 Chair: Simon Campbell**Labour Productivity Across Sectors**Evidence on the Big Firm Premium
from a Decade of Linked Employer
Employee Data**Isabelle Sin³**
/ **Steven Stillman*¹** / **John Gibson²**
¹Free University of Bozen-Bolzano, Italy
²University of Waikato, New Zealand
³Motu Economic and Public Policy Research, New ZealandCompetitiveness at the Country-
Sector Level: New Measures Based
on Global Value Chains**Martyna Marczak*¹**
/ **Thomas Beissinger^{1,2}**
¹University of Hohenheim, Germany
²IZA, GermanyMeasuring Productivity Dispersion in
Selected Australian Industries**Simon Campbell*¹** / **Thai Nguyen²**
/ **Alexander Sibelle¹** / **Franklin Soriano²**
¹Australian Treasury, Australia
²Australian Bureau of Statistics, Australia**6-D** Room: Shilla 4 Chair: Qisha Quarina**Female Labour Supply**Couples' Time Use Before and After the
Kids: A Fractional Panel Fixed Effects
Approach**Tung Mai*** / **Kevin Staub**
University of Melbourne, AustraliaStatus Externalities and Low Birth
Rates in Korea**Seongeun Kim²**
/ **Michèle Tertilt¹** / **Minchul Yum*¹**
¹University of Mannheim, Germany
²Sejong University, Republic of KoreaWho Works Who Stays?
Assortative Education and Working
Arrangement among Married
Couples in Indonesia**Ratu Khabiba¹** / **Qisha Quarina*²**
¹Master Program of Population and
Labor Economics, Universitas Indonesia, Indonesia
²Department of Economics, Faculty of Economics and
Business, Universitas Indonesia, Indonesia

PARALLEL SESSION 6

Saturday 15 December 2018
11:00-12:30**6-E** Room: Baekje 1 Chair: Diego Ubfal**Human Capital Inputs and Outcomes**

Access to Piped Water, Time Savings and Absenteeism in School: Evidence from India

Shiuli Vanaja
Cornell University, USA

Sleep More, Study Less? The Impact of Delayed School Start Time on Sleep and Academic Performance

Jinseok Shin^{1,2}
¹The University of Texas at El Paso, USA
²The University of Texas at Austin, USA

Working while Studying

Thomas Le Barbanchon¹
/ **Diego Ubfal**^{*1}
/ **Federico Araya**²
¹Bocconi University, Italy
²Ministry of Labor and Social Security, Uruguay**6-F** Room: Baekje 2 Chair: David Johnston**Returns to Education II**

Do You Speak my Language? The Effect of Sharing a Teacher's Native Language on Student Achievement

Kelvin KC Seah
National University of Singapore, Singapore

Returns to Higher Education Subjects and Tiers in China - Evidence from the China Family Panel Studies

Lili Kang¹ / **Fei Peng**¹ / **Yu Zhu**^{*2}
¹Shanghai Lixin University of Accounting and Finance, China
²University of Dundee, UK

The Causal Effect of Education on Chronic Health Conditions

Katharina Janke¹
/ **David Johnston**^{*2}
/ **Carol Propper**³
/ **Michael Shields**²
¹Lancaster University, UK
²Monash University, Australia
³Imperial College London, UK

PARALLEL SESSION 6

Saturday 15 December 2018
11:00-12:30**6-G** Room: Baekje 3 Chair: Torben Dall Schmidt**Jobs, Wage Growth and Unions**

Capital-Skill Complementarity, Wage Bargaining, and Inequalities

Yasuyuki Osumi
University of Hyogo, Japan

Is Declining Union Membership Contributing to Low Wages Growth?

James Bishop^{1,2}
/ **Iris Chan**^{*1}
¹Reserve Bank of Australia, Australia
²University of Sydney, Australia

The Loss from Being Foreign: Unions, Human Capital and Native Wage Premium among Cross-Border Commuters to Denmark.

Torben Dall Schmidt
University of Southern Denmark, Denmark**6-H** Room: Baekje 4 Chair: Kerry Papps**Minimum Wage Effects**

Analyzing the Impacts of China's Minimum Wage Standards on Reducing the Risk of Being Working Poor: A Study Based on Chinese Household Survey Data

Yongjian Hu
Tianjin University of Finance and Economics, China

Minimum Wages, Employment, and Business Closing

Jungmin Lee^{*1}
/ **Geumbi Park**²
¹Seoul National University, Republic of Korea
²University of Virginia, USA

Wage Growth and Bargaining in the Minimum Wage Era

Kerry Papps¹
¹University of Bath, UK
²IZA, Germany

PARALLEL SESSION 6Saturday 15 December 2018
11:00-12:30**6-I Paternity Leave and the Gender Gap**
Room: Baekje 5 Chair: Youjin Choi

Paternity Leave and the Careers of Young Men

Julian Johnsen²
/ Hyejin Ku^{*1}
/ Kjell Salvanes²¹University College London, UK
²NHH, Norway

Should Home Economics Be Compulsory for Boys?: Human Capital Development and Overcoming Social Norms

Hiromi Hara
Japan Women's University, Japan

Why Don't Married Men Take Parental Leave?

Youjin Choi
Western University, Canada**6-J Korea Past and Present**
Room: Shilla 5 Chair: Dandan Zhang

Historical Trends and Determinants of Social Mobility: A Study of Korean Dynastic Kingdom

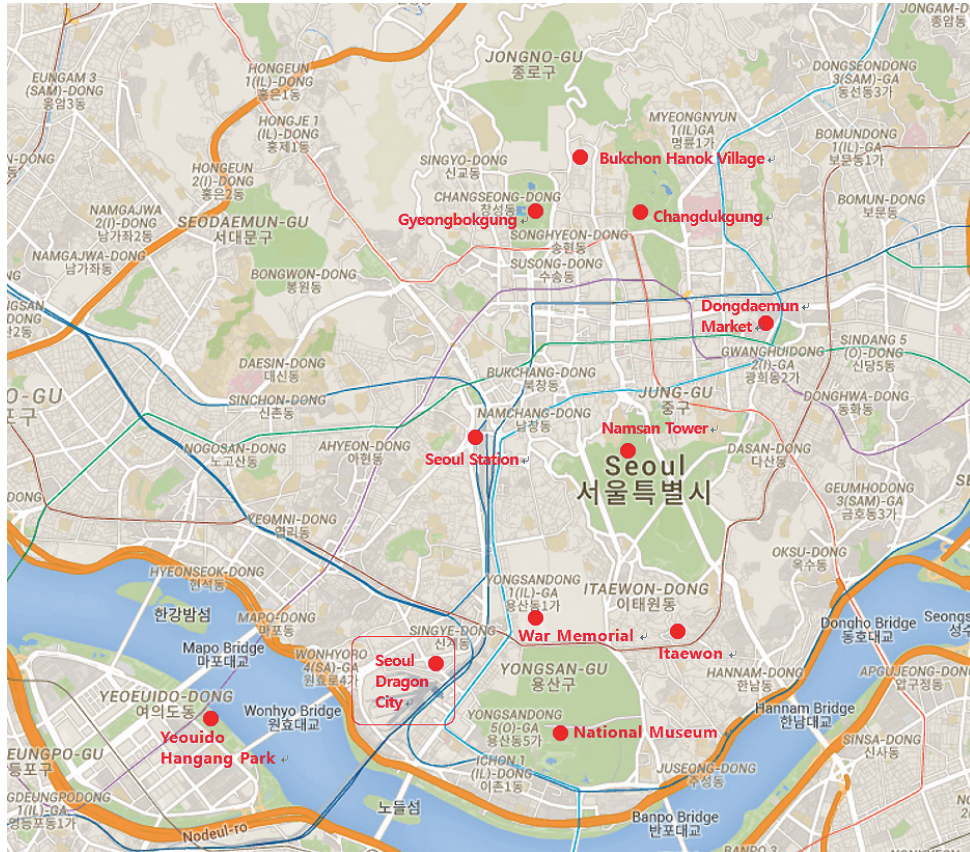
Sok Chul Hong
/ Yangkeun Yun^{*}
Seoul National University, Republic of Korea

Why Were They Late in Applying for Basic Senior Pension? An Empirical Analysis on the Anomalies

Jongseok Oh
/ Younghoon Kim^{*}
Seoul National University, Republic of Korea

Air Pollution and Consumption Behavior: Evidence from a Prison Data in China

Shuai Chen²
/ Min Wang¹
/ Dandan Zhang^{*1}
¹National School of Development, Peking University, China
²Zhejiang University, China**TOURIST
INFORMATION**Asian and Australasian
Society of Labour Economics
2018 Conference



Editors' pick

our selection of some of the best tourist attractions located near the Seoul Dragon City. In addition to this guide, visitseoul.net will be a useful website for touring Seoul.

VISIT SEOUL NET

TRADITIONAL KOREAN CULTURE



Gyeongbokgung Gyeongbok Palace

This walking tour starts at Gyeongbokgung (Gyeongbok Palace), the first royal palace built by the Joseon Dynasty (1392-1910) over 600 years ago, and along a charming traditional stone wall path to Cheongwadae (Blue House) Sarangchae, a historical memorial museum about the Korean presidential residence, where visitors can learn about the past, present and future visions of Seoul and Korea. Compared with Beijing's Forbidden City (Imperial Palace of Ming and Qing Dynasty), Gyeongbokgung is somewhat small in terms of size. However, Gyeongbokgung was designed to create harmony and balance with surrounding mountains (Inwangsan and Bukaksan) and river (Cheonggyecheon) and this is a distinguishing feature from Forbidden City.

Subway

Gyeongbokgung Stn. (Line no. 3) exit 5,
Gwanghwamun Stn. (Line no. 5) exit 2,
Jonggak Stn. (Line no. 1) exit 1 or 2 (~1km)

Bus

7016, 162 etc.



Changdeokgung Changdeok Palace

Changdeokgung is a UNESCO World Heritage Site and one of the most well-preserved royal palaces from the Joseon Dynasty founded in 1392 and lasted until 1910. This is where kings and their ministers discussed state affairs to effectively reign over the people, and where the royal family resided. While the main buildings of Gyeongbokgung, built on flat land, were strictly laid out on a north-south axis, the buildings and pavilions of Changdeokgung, located at the foot of a mountain, were positioned more naturally, following the contours of the land. This created a more relaxed atmosphere, while maintaining the dignity of a royal palace. The Rear Garden also known as the Secret Garden is famous as the masterpiece of Korean traditional gardening.

Subway

Anguk Stn. (Line no. 3) exit 3

Bus

151 / 162 etc

CITY LIGHTS

**Bukchon Hanok Village**

Surrounded by Gyeongbokgung, Changdeokgung and Jongmyo Shrine, Bukchon Hanok Village is home to hundreds of traditional houses, called hanok, that date back to the Joseon Dynasty. The name Bukchon, which literally translates to "northern village," came about as the neighborhood lies north of two significant Seoul landmarks, Cheonggyecheon (Cheonggye Stream) and Jongno. Today, many of these hanoks operate as cultural centers, guesthouses, restaurants and tea houses, providing visitors with an opportunity to experience, learn and immerse themselves in traditional Korean culture.

Subway

Anguk Stn (Line no. 3), Exit 1 or 2

Bus

Take the Maeul Bus Jongno 02 at Anguk Stn exit 2 and get off at Bukchon Hanok Village Bus Stop.

**Namsan Seoul Tower** N Seoul Tower

Namsan Seoul Tower's mountain surroundings on Namsan Mountain have made it a popular place to unwind for locals and tourists alike. Seoul has a number of viewing platforms where visitors can enjoy the nighttime cityscape or gaze out onto the Hangang (River) but the tower's Digital Observatory is unique, offering an astonishing 360 degree panorama over the city, and 32 LCD screens recounting the 600-year history of Seoul. That is why the observatory is so popular and such a source of pride.

Bus

Refer to <http://www.seoultower.co.kr/en/visit/> transfers. The bus stop near Chungmuro Stn (Line no.3 or 4) exit 4 is recommended (the yellow bus 02 & 05 stop).

MUSEUMS

**Hangang River**

The Hangang River is the most important physical landmark in the city, dividing the north and south. Lined with parks and recreational facilities on both banks, it's the perfect place to rent bikes, go on cruise up the river, enjoy bird-watching, or splash around and cool off in public swimming pools during the summer months. There are lot spots along the both banks. You can refer to the map of Seoul city. Yeouido Hangang Park

Subway

Yeouinaru Stn (Line no. 5) exit 2

Bus

505, 5012 / 262 / 162, 503, etc

**National Museum of Korea**

The museum is internationally-renowned, once ranked the 12th most-visited museum in the world by the 2013 Art Newspaper and declared a "must-see place" by the Michelin Guide, which awarded it 3 stars. The museum offers free 1-hour guided tours to visitors in Korean, English, Japanese, and Chinese on its major masterpieces. Highly recommended.

Subway

Ichon Stn (Line no. 4) exit 2

Bus

400, 502

FOOD & SHOPPING



The War Memorial of Korea

The War Memorial of Korea exhibits and preserve materials related to the Korean War (1950~1953) and serves as a national moral educational venue. The museum houses approximately 33,000 artifacts with about 10,000 on display at an indoor and outside exhibition halls. There are six separate indoor halls, including Expeditionary Forces Room, Patriotic Memorial Room, War History Room, 6·25 Korean War Room, Development Hall and Large Machinery Room. The outdoor exhibition hall showcases large-sized weapons. Don't miss it if you are interested in history or military.

Subway

Samgakji Stn (Line no. 4 or no.6) exit 12

Bus

Yongsan 03 (small bus, recommended)
150, 504, 751, 151, 152, 501, 506, 507,
100, 500, 502, 605, 750A, 750B, 752



Itaewon

Located near the US Army Garrison Yongsan and the Seoul Central Mosque, Itaewon is filled with many great restaurants serving the foods of many cultures world-wide as cooked by professional chefs from across the globe. What best makes the area international is the availability of cuisine you may not have tried before, the exotic atmospheres of the restaurants, and music to which you may not have been exposed previously.

Subway

Itaewon, Noksapyeong Stn (Line no. 6)

Bus

Yongsan 03 (small bus), 400



Dongdaemun Market

If you enjoy shopping, you have probably heard about Dongdaemun Market. Korea's newest fashions appear and spread from here. After midnight is when Dongdaemun Market really comes to life, a time when business seems to pick up in earnest. Because Dongdaemun is the epicenter of Korea's fashion industry, any item related to fashion can be purchased here.

Subway

Dongdaemun History & Culture Park Stn
(Line no. 2 or 4 or 5)

Bus

507 / 152, 100 etc



Dongdaemun Design Plaza(DDP)

Dongdaemun Design Plaza (DDP) is the newest and most iconic landmark of the Korean design industry. Located at the center of the Dongdaemun area, the DDP will serve as a key venue for design-related shows and conferences, exhibitions, and other events and gatherings. Designed by world renowned architect, Zaha Hadid, DDP is the world's largest atypical architecture. The DDP is comprised of five halls: Art Hall, Museum, Design Lab, Design Market, and Dongdaemun History and Culture Park.

Subway

Dongdaemun History & Culture Park Stn
(Line no. 2 or 4 or 5)

Bus

507 / 152, 100 etc

AROUND THE VENUE



HDC I'PARK mall

I'PARK mall is the urban entertainment shopping mall composed of various shopping space and cultural, entertainment space located at Yongsan Station. It consists of SHILLA IPARK duty free shop, I'PARK department store, E-Mart (discount store), other stores, restaurants, and CGV IMAX (movie theatre). As you can see from the shop list, you can get almost everything from daily necessities to luxury goods.

Yongsan Electronics Market

Seoul Dragon City is located at the center of Yongsan Electronics Market. Yongsan Electronics Market is a collection of over 5,000 electronics and office equipment markets and stores spread across 20 buildings. If it has to do with technology, then odds you will find it here at one of the nearly thousands of independent stores in the area. However, you may need cash and a good negotiation skill.

SEOUL NATIONAL UNIVERSITY & DEPARTMENT OF ECONOMICS



Seoul National University is Korea's leading multidisciplinary university, with more than 5,000 staff and 28,000 students from different countries. Inheriting Korea's academic heritage and being established as the first national university in 1946 SNU has played a central role in the modernization, democratization, and economic development of the nation. SNU has experienced enormous improvements over the years and is emerging as a world-class research university.

The Seoul National University Department of Economics was established in 1946 at the College of Commerce with the new kick-off of the Seoul National University. For more than half a century, our Economics Department is well-known for excellence of its teaching, advising, and faculty research, with a strong reputation for producing real world economists as well as academic ones. Our graduates have been hired at many leading economic institutions including government, financial institutions, corporate firms, legal sectors, and universities and research institutions all over the world. Our Economics Department has played a major role throughout Korea's miraculous economic growth by importing modern economic principles into Korea, applying/developing and customizing the economic principles to help Korea develop, producing economic researchers and policy makers, sending graduates abroad, strengthening own research basis, and networking with premier research institutions worldwide.

The Economic Department has 38 faculty members who teach and conduct research in the areas such as labor economics, economic theory, applied microeconomics, theoretical and applied econometrics, and behavioral and experimental economics. The Economics Department offers B.A. in Economics for undergraduate students and both M.A. and Ph.D. in Economics for graduate students. The Institute of Economic Research, sister institute of the Economics Department, is home to the Seoul Journal of Economics (in English), and to the Economic Journal (in Korean). As of January 2017, the Economics Department has 1,184 undergraduate enrollments, 148 graduate enrollments in M.A. program, and 73 graduate enrollments in the Ph.D. program.



History

1895 ORIGIN

Emperor Gojong established the modern higher education system to promote the nation's independence and modernization.

1946 FOUNDATION

The Korean government established SNU to educate leaders of the newly independent nation. SNU was the first comprehensive university of Korea, aiming to produce intellectual elites who would lead the newly liberated country.

1975 RELOCATION

SNU merged its multiple campuses into three main locations: Gwanak, Yeongeon and Suwon.

1987 DEMOCRATIZATION

The SNU community contributed to the democratization of the nation and educational system.

1995 INTERNATIONALIZATION

SNU became renowned internationally as a top research university.

2011 AUTONOMY

Changing its legal status from a governmental organization to an independent institution in 2011, SNU has enhanced its global competitiveness.

Facts about SNU

As of April 2015

Research

Globally 7th
in terms of
SCI paper publications

Global Standing

36th in the world,
8th in Asia by 2015
QS World University
Rankings

Campus

Medical campus
in Yeongeon, Seoul

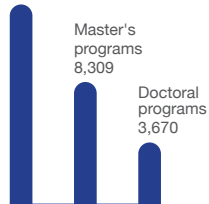
Main campus
in Gwanak, Seoul

Convergence
sciences in Suwon

Agricultural
campus
in Pyeongchang

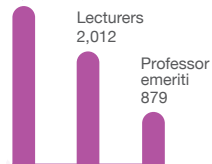
Students

Undergraduate
16,511



Faculty

Full-time faculty
2,620



Asian and Australasian Society
of Labour Economics

SNU's International Partners

	University	Colleges	Research Institutes
General Academic Agreements	291 in 59 countries	611 in 58 countries	274 in 36 countries
Student Exchange Agreements	208 in 50 countries	356 in 45 countries	66 in 20 countries



Asian and Australasian Society
of Labour Economics

THANKS TO OUR SPONSORS



서울대학교
SEOUL NATIONAL UNIVERSITY



서울대학교 경제학부
DEPARTMENT OF ECONOMICS
SEOUL NATIONAL UNIVERSITY



KOREA
TOURISM
ORGANIZATION
www.visitkorea.or.kr



BrainKorea21^{PLUS}



CReAM
Centre for Research &
Analysis of Migration



National Research
Foundation of Korea



한국노동경제학회
THE KOREAN LABOR
ECONOMIC ASSOCIATION

VISIT SEOUL NET™



Asian and Australasian Society
of Labour Economics

Asian and Australasian Society of Labour Economics 2018 Conference

Conference website www.aasie2018.org



서울대학교 경제학부
DEPARTMENT OF ECONOMICS
SEOUL NATIONAL UNIVERSITY



KDI
Korea Development Institute



CREAM
Center for Research in
Economic Analysis & Modeling



NRF
National Research
Foundation of Korea



BrainKorea21plus
VISIT SEOUL NET

한국노동연구원
Korea Research Institute of
Labor Studies